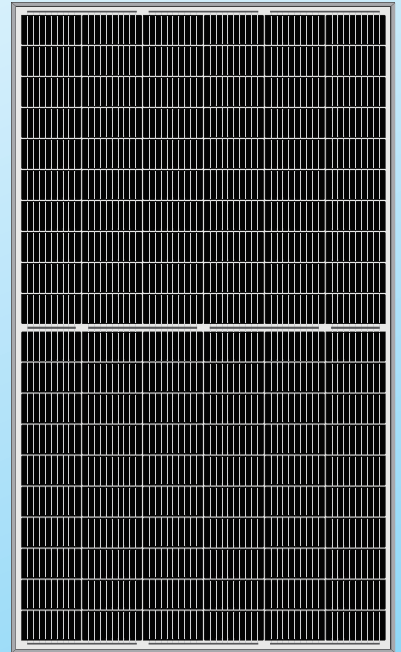


mono HCM60X9  
**325~345W**

**Half-Cell  
 High Efficiency  
 PV Module**



**HIGH EFF.**

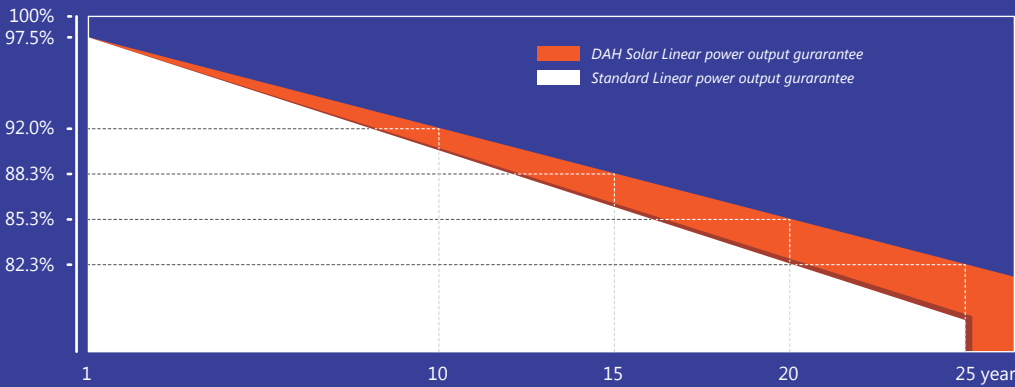


**HALF CELL**



**Quality Guarantee**

12-year material & technology warranty  
 25-year linear power output warranty



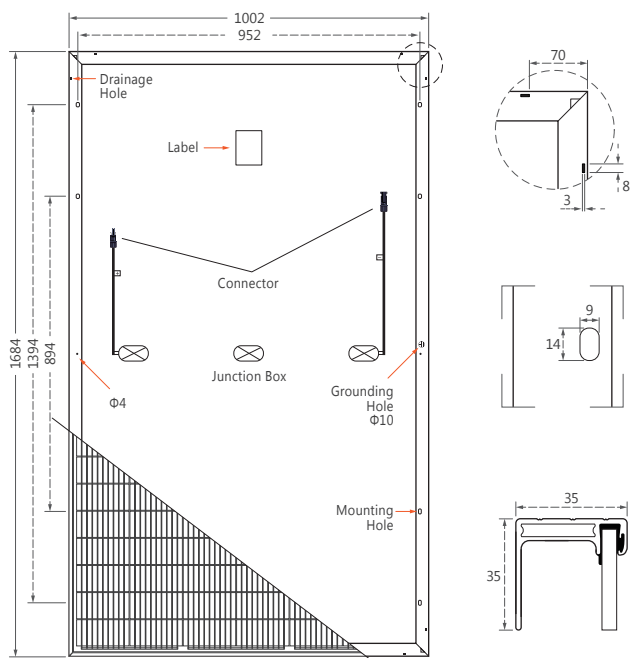
**20.45%**  
 Max Module Eff.

**0~+5W**  
 Positive Tolerance

**Performance Advantage**

- > More Busbars, the Less of Broken and cracking, As the Narrowed Cell Bus Bar Width, the Light Receiving Area and Power are Increased too.
- > Half-Cell technology and back passivation technology, excellent photoelectric conversion efficiency.
- > Excellent low-light power generation performance, even if it is half blocked, there is still 50% power output.
- > Series-parallel combined circuit design, higher output power than conventional PERC.

## Design



## Mechanical Specification

Cells Type	Mono 158.75×79.375mm
Weight	19kg
Dimension (L×W×T)	1684×1002×35mm
Cable	4.0mm <sup>2</sup> ; Portrait: N 400mm/P 300mm, Cable length can be customized
No.of Cells	120 (6×20)
Glass	3.2 mm High Transmission, Antireflection Coating
Junction box	IP68, 3 Bypass Diodes
Connector	QC4 or MC4 Compatible
Packing	31pcs/pallet, 372pcs/20GP, 858pcs/40HQ

## Operating Parameters

Maximum system voltage	1000V/1500V DC
Operating Temperature	-40 ~ +85°C
Maximum series fuse rating	20A
Snow load, frontside	5400Pa
Wind load, backside	2400Pa
Nominal operating cell temperature	45°C±2°C
Application level	Class A

## Electrical Characteristics(STC)

Module Type	HCM60X9-325W	HCM60X9-330W	HCM60X9-335W	HCM60X9-340W	HCM60X9-345W
Maximum Power (Pmax)	325W	330W	335W	340W	345W
Open-circuit Voltage (Voc)	40.4V	40.6V	40.8V	41.0V	41.2V
Maximum Power Voltage (Vmp)	33.5V	33.7V	33.9V	34.1V	34.3V
Short-circuit Current (Isc)	10.27A	10.33A	10.39A	10.46A	10.53A
Maximum Power Current (Imp)	9.71A	9.80A	9.89A	9.98A	10.06A
Module Efficiency (%)	19.26%	19.56%	19.85%	20.15%	20.45%

Power Tolerance 0~+5W

Temperature Coefficient of Isc 0.05%/°C

Temperature Coefficient of Voc -0.29%/°C

Temperature Coefficient of Pmax -0.37%/°C

Standard Test Environment Irradiance 1000w/m<sup>2</sup>, Cell temperature 25°C, Spectrum AM1.5

## Electrical Characteristics(NOCT)

Module Type	HCM60X9-325W	HCM60X9-330W	HCM60X9-335W	HCM60X9-340W	HCM60X9-345W
Maximum Power (Pmax)	245W	249W	253W	257W	261W
Open-circuit Voltage (Voc)	39.4V	39.7V	40.1V	40.4V	40.7V
Maximum Power Voltage (Vmp)	32.1V	32.4V	32.7V	33.0V	33.3V
Short-circuit Current (Isc)	8.11A	8.18A	8.22A	8.28A	8.32A
Maximum Power Current (Imp)	7.63A	7.69A	7.74A	7.79A	7.84A

Standard Test Environment Irradiance 800w/m<sup>2</sup>, Cell temperature 20°C, Spectrum AM1.5, Wind speed 1m/s